

New PCs! A quick tour and Inkscape assignment (Make 1 and Make 2)

Due: 4th period: Tuesday 10/19

5th period: Wednesday 10/20

So we've got new PCs!

By now you know the login password for the Project Make account: "maker".

All of your Tinkercad work is stored in the cloud (that means on the Tinkercad web site).

All of your Inkscape work is saved on a PC.

1. Create a folder with your name on the Desktop

Please create a folder on the desktop with your name. This is where you will store your files.

We are sharing this computer with six other classes (including three other Maker classes) so let's work together to keep things organized and neat.

I put a shortcut to the Downloads folder on the Desktop. This is often where files you download end up. I also put a shortcut to the Documents folder. That's another place where files end up.

2. Open Inkscape.

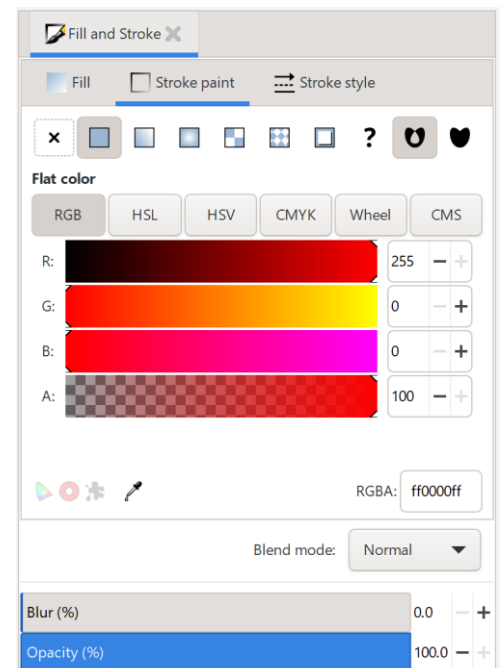
The new PCs have a new version of Inkscape. Most of it is the same, some things have changed.

In a blank Inkscape document draw a rectangle. Select it with the Select tool (the solid black arrow on the top of the tool column). Open Object Fill and Stroke from the Object menu.

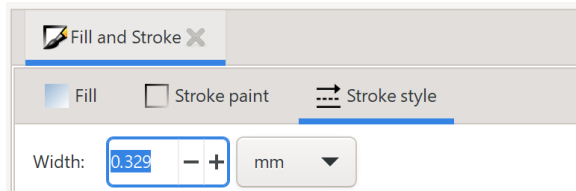
Go to the Stroke paint tab. It should look like this to the right.

As a quick review, things we want to cut on the laser cutter need to be set as shown to the right: R 255, G and B at 0, and A: at 100. The Opacity setting at the bottom should never be changed for any drawing in this class and should always be set to 100. The Blur setting should always be at 0.

Set or leave the rectangle at these settings. Go to the Stroke style tab (see next page).

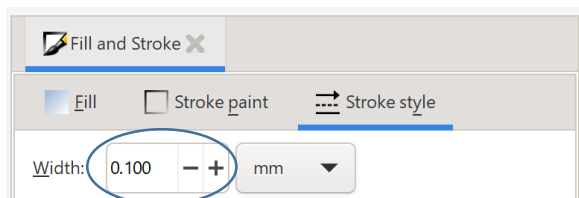


The top of this window is what matters the most.



Starting today, when we want to cut something on the laser we will set the stroke style to .1 millimeters (that is point 1 millimeters) instead of .5 pixels. This will be easier for us in the long run because we won't have to switch the pop-up to "px" to get this done. (.1 mm and .5 px are nearly the same value).

3. Set your rectangle to .1 mm:



4. Write your name using the text tool.

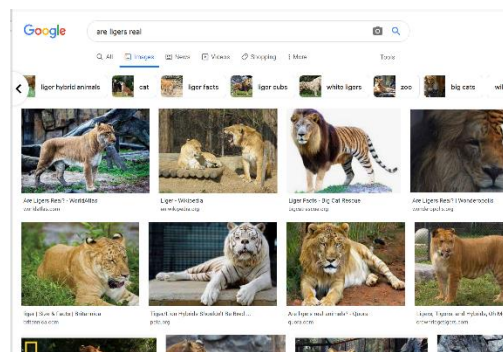
Set the font to a non-default font. Make your name fill the document from left to right and place your name up near the top of the document, above your rectangle.

Set the fill to off, and the stroke to .1 mm red.

Leave Inkscape Open.

5. Open a new tab in Chrome.

Go to Google and search for "are ligers real". You should get something like this:



(continued on next page)

You may remember the snipping tool I made you use on our old computers. In Windows 10 the tool was renamed. **You now can take a partial screen shot by holding down the Shift key, the Windows key, and then pressing the S key.** Do this now and take a screen shot of your entire Google Search Liger results window.

Switch back to Inkscape and paste the screen shot snipped you got into your document. Resize it and position it so that it does not cover your rectangle or your name.

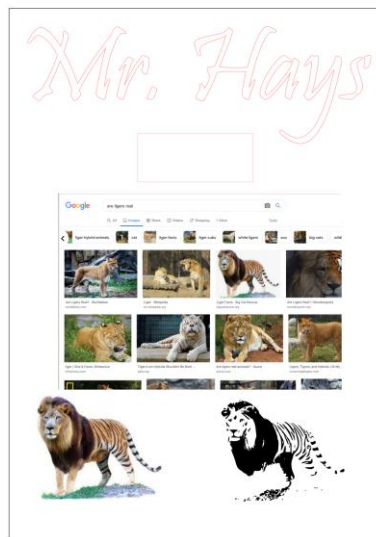
6. Go back to Chrome and choose a specific liger photo. Right click on it and choose "copy image".

Go back to Inkscape and paste your chosen image. Move it so that it is not covering anything you have in your document already.

7. Select the liger and open Trace bitmap. Click Update and Apple, then close Trace Bitmap.

Move the traced version off the original, leave both there. It's OK if your traced version is weird or odd. I just wanted you to practice doing a trace bitmap.

In the end your document should look something like mine below. Save it. Move it to the folder you created with your name. Turn it in to the Google Classroom.



Call me over to see your new folder with your name containing your file as well.